

MIDLAND

TRUCK MOUNTS

Bronto Skylift 34 MDT

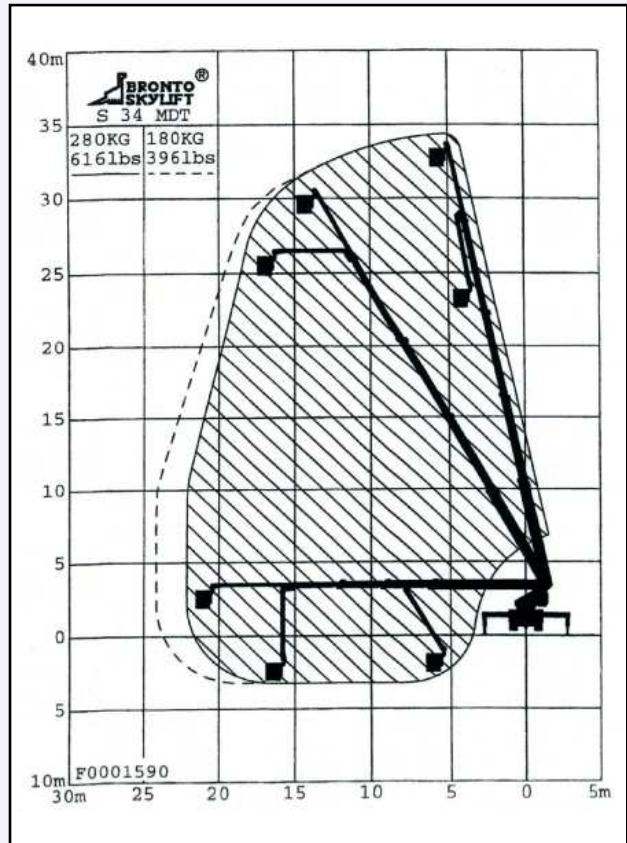


This machine is for hire operated only

Technical Specifications:

- * Working Height34.00m
- * Platform Height 32.00m
- * Max.outreach/cage load22m/280kg
.....24m/180kg
- * Max reach below ground level ..2.50m
- * PowerDiesel
- * Platform size1.80x1.00m
- * Transport height3.80m
- * Transport length9.50m
- * Rotation +/-280
- * Working width max.5.60m
- * Working width min.2.60m
- * Max Weight17 tons
- * Max outrigger force130Kn
- * Max footplate pressure6.1 kg/cm²
- * Max footplate pressure
with plywood ground plate2.5kg/cm²

Working Envelope



On Site Planning

We can offer a site survey service to assess your machine requirements.

Permissions

In certain locations permission may be required from local authorities to comply with current health and safety regulations.

At your service

Our experienced IPAF qualified staff are here to help you complete your task.

Midland Truck Mounts Ltd.,
Unit 4, Arkwright Hill Farm,
Lutterworth Rd, Cosby,
Leicestershire LE9 1RH

For more information on our Truck Mounted
Platforms please contact our hire desk on:
01455 208 105
www.midlandtruckmounts.co.uk