

MIDLAND

TRUCK MOUNTS

Ruthmann Steiger TB220

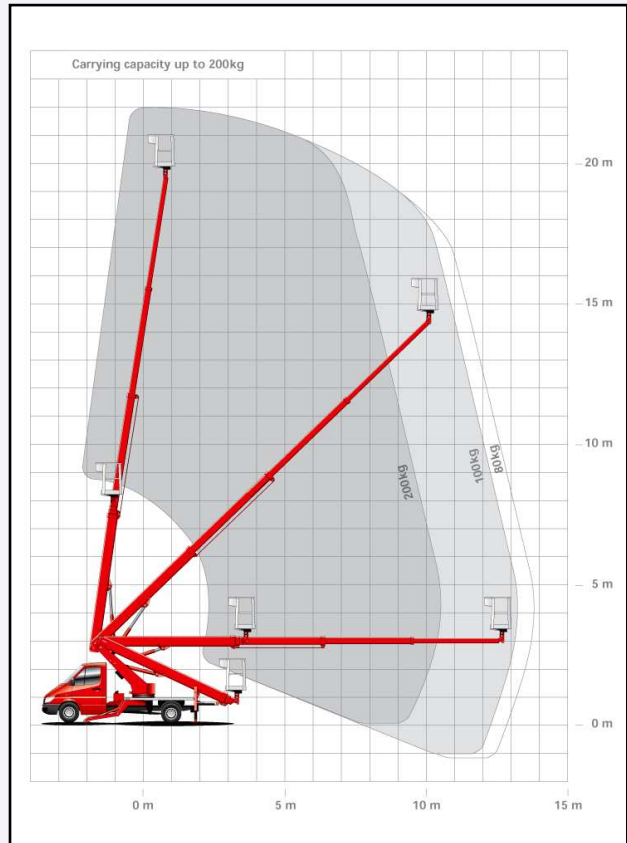


Technical Specifications:

- * Working height22,00m
- * Lifting height20,00m
- * Lateral outreach10,50m -
.....13,80m*
- * Range of rotation2 x 225°
- * Size of working cage1,40 x 0,70m
- * Rotating angle of
working cage2 x 55°
- * Carrying capacity:200 kg
- * Telescopic extension2,98m
- * Overall height11,96 m
- * Jacked width3,10m front
.....2,68m rear

*Depending on load and position.

Working Envelope



On Site Planning

We can offer a site survey service to assess your machine requirements.

Permissions

In certain locations permission may be required from local authorities to comply with current health and safety regulations.

At your service

Our experienced IPAF qualified staff are here to help you complete your task.

Midland Truck Mounts Ltd.,
Unit 4, Arkwright Hill Farm,
Lutterworth Rd, Cosby,
Leicestershire LE9 1RH

For more information on our Truck Mounted
Platforms please contact our hire desk on:
01455 208 105
www.midlandtruckmounts.co.uk